

The following eight types of adaptors are available for BIM Small Capacity Fine Fog Nozzles: BIMV, BIMV-S, BIMK, BIMK-S, BIMJ, which are introduced on pages 13 to 22.

Types of Adaptors

Type N Liquid and air enter into adaptor from both sides.

Compressed air

Liquid

Pipe conn. size

Pipe conn. size

Pipe conn. size

Pipe conn. size

Type T Air inlet is on the center line and liquid inlet is on a 90° angle line to the center line. Suitable for use in a small space.

M8 depth 6

Pipe conn. size

Compressed air

Liquid

Pipe conn. size

Pipe conn. size

φD

L3

L4

Type NDB Spray capacity is adjustable with needle valve.

Liquid

Pipe conn. size

Compressed air

Pipe conn. size

φ30

27

50

L5

Type UNDB Besides the features of the NDB-type adaptor, spray direction can be adjusted within +/- 15° by means of a ball joint. It is ideal for fine-tuning of spray direction after pipe assemblies have been completed.

Liquid

Pipe conn. size

Compressed air

Pipe conn. size

φ30

27

50

L5

Type SNB Spray ON/OFF can be regulated by turning compressed air ON/OFF, which actuates an internal piston, to open or close the nozzle. Compressed air pressure over 0.2 MPa starts the spray.

Liquid

Pipe conn. size

Compressed air

Pipe conn. size

φ1*

φ30

27

29.5

L6

Type USBN Besides the features of the SNB-type adaptor, spray direction can be adjusted within +/- 15° by means of a ball joint. It is ideal for fine-tuning of spray direction after pipe assemblies have been completed.

Liquid

Pipe conn. size

Compressed air

Pipe conn. size

φ1*

φ30

27

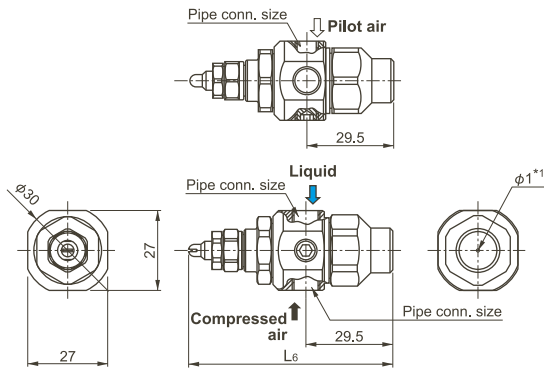
29.5

L6

*1) Hole φ1 is for air relief.

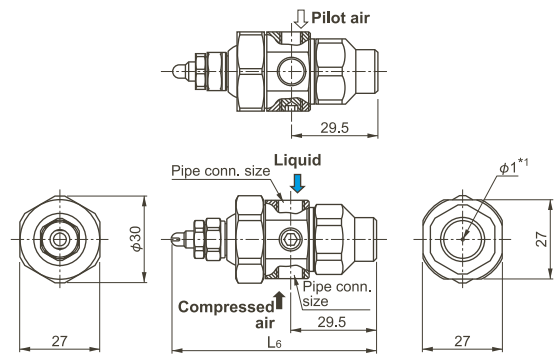
Types of Adaptors

Type SPB Spray ON/OFF can be regulated by switching the pilot air ON/OFF. The pilot air actuates an internal piston to regulate the spray. (Pilot air pressure more than 0.2 MPa required) This type of adaptor is suitable for applications to avoid scattering droplets of fog.



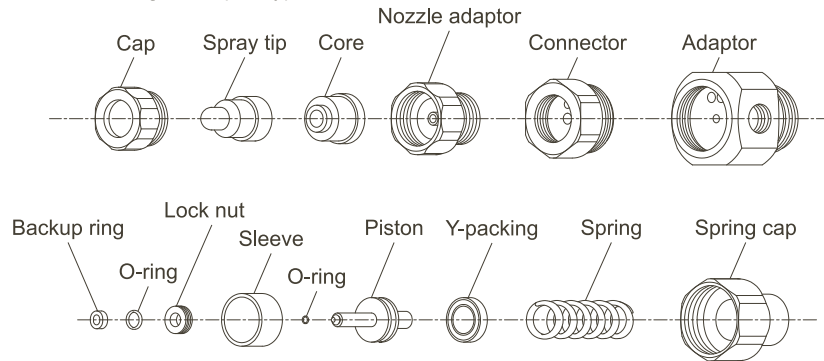
*1) Hole φ1 is for air relief.

Type USPB Besides the features of the SPB-type adaptor, spray direction can be adjusted within +/- 15° by means of a ball joint. It is ideal for fine-tuning of spray direction after pipe assemblies have been completed.



Structure of SPB adaptor

This exploded view shows a structure of SPB adaptor as an example. Structure and components varies according to adaptor types.



CAUTIONS for NDB, UNDB, SPB, USPB, SNB, and USNB adaptors

Thin-walled nozzle adaptor tends to deform easily if installed directly by itself.

First assemble Core, Spray tip, Cap and Nozzle adaptor by hand with light pressure, then attach them to Connector (or UT Ball). Use a well-fitting hexagon socket wrench instead of a regular spanner (wrench), as a spanner may deform the unit.

Pipe connection sizes and mass

Adaptor type	Air consumption code	Pipe connection sizes			Mass (g)
		Compressed air	Liquid	Pilot air	
N	02, 04, 075	Rc1/8	Rc1/8		55
	15, 22	Rc1/4	Rc1/4		130
T	02, 04, 075	Rc1/8	Rc1/8		80
	15, 22	Rc1/4	Rc1/4		210
NDB UNDB	02, 04, 075	Rc1/8	Rc1/8		172
	15, 22				193
SPB USPB	02, 04, 075	Rc1/8	Rc1/8	Rc1/8	146
	15, 22				167
SNB USNB	02, 04, 075	Rc1/8	Rc1/8		151
	15, 22				172

Dimensions

Air consumption code	Dimensions (mm)									
	L1	L2	L3	L4	L5	L6	a	H1	H2	φD
02	25.3	16.3	40.8	24.8	87.3	66.8	32	17	21	23.5
04*2	26.8	17.8	42.3	26.3	88.8	68.3	32	17	21	23.5
BIMJ 2004	27.0	18.0	42.5	26.5	89.0	68.5	32	17	21	23.5
075	28.1	19.1	43.6	27.6	90.1	69.6	32	17	21	23.5
15	39.1	26.6	60.1	38.1	97.6	77.1	43	23	29	32.5
22	41.3	28.8	62.3	40.3	99.8	79.3	43	23	29	32.5

*2) Excludes BIMJ2004.

How to Use BIM Controlling Adaptors

■ **SPB adaptor**

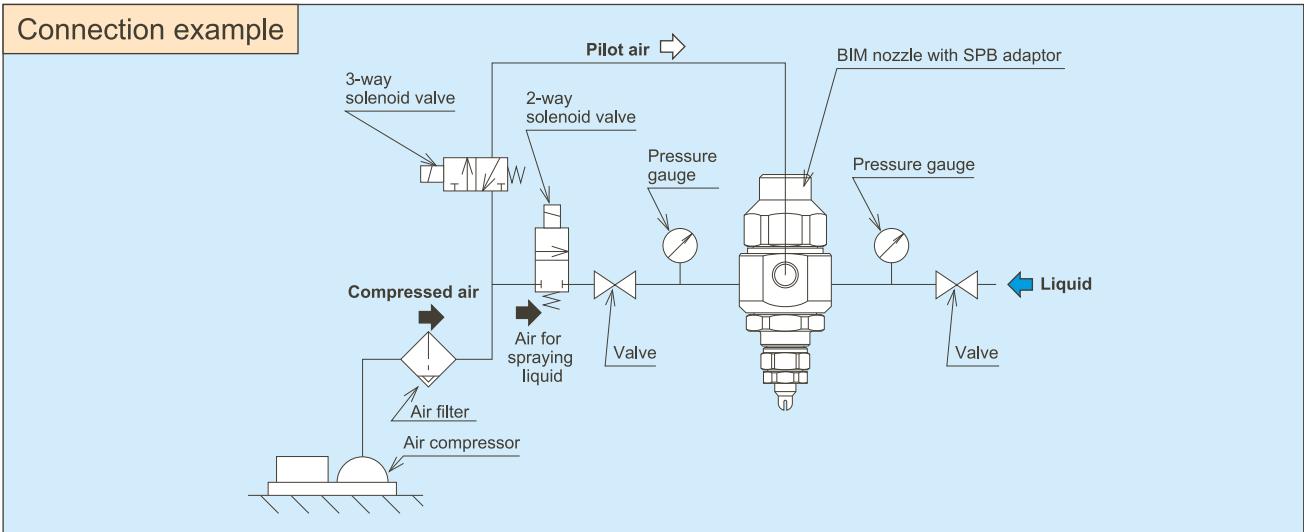
Spray ON/OFF can be regulated by switching the pilot air ON/OFF.

The pilot air actuates an internal piston to regulate the spray. (Pilot air pressure must be 0.2 MPa or higher.) As even low pressure atomizing air can be used, production of a range of fine to coarse fog is possible. Best-suited for when there is concern about scattering droplets.

Function chart

Compressed air			ON		
Pilot air	OFF	ON	OFF	ON	OFF
Liquid	Stop	Spray	Stop	Spray	Stop

Connection example



■ **SNB adaptor**

Spray ON/OFF can be regulated by turning compressed air ON/OFF.

Compressed air pressure must be 0.2 MPa or higher in order to start the spray.

Function chart

Compressed air	OFF	ON	OFF	ON	OFF
Liquid	Stop	Spray	Stop	Spray	Stop

Connection example

